



Precision Escalator Products, Inc.

Fujitec

Steps and Components	174
Step Chains and Components	175
Handrail Components	177
Main Drive Components	183
Combplates	184
Demarcations	185
Safety Components	186



PF1000100

STEP - 1000mm BLACK w/YELLOW DEMARCATIONS - GS8000 ESCALATOR

PF1000101

STEP - 1000mm SILVER w/YELLOW DEMARCATIONS - GS8000 ESCALATOR



PF1100199

STEP ATTACHMENT BUSHING
FUJITEC GS8000 ESCALATOR



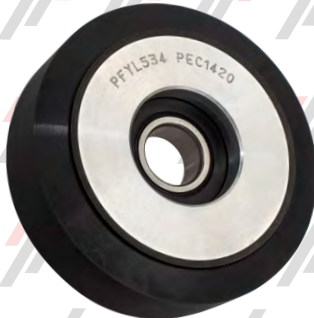
PF1000623

SPRING - STEP ATTACHMENT
FUJITEC ESCALATOR



PFD63056001

STEP SHIM (.3mm) SPLIT
FUJITEC ESCALATOR



PFYL534

ROLLER - STEP / STEP CHAIN
76mm OD x 20mm FACE - 1200VS - FUJITEC ESCALATOR



PFC5306001

ROLLER - STEP CHAIN TRAIL
108mm OD x 26mm FACE - FUJITEC ESCALATOR



PFD62425001

STEP ATTACHMENT BUSHING
20/42 TON - FUJITEC ESCALATOR

PFY899VD11

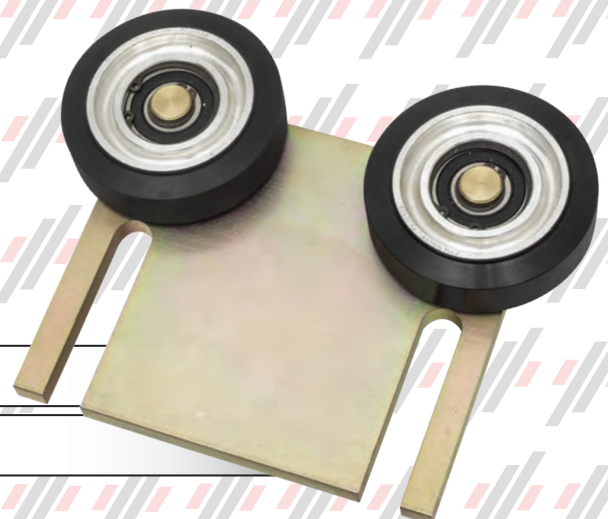
STEP ATTACHMENT BUSHING
15 TON - FUJITEC ESCALATOR

PFC63059001

STEP GUIDE BRACKET 6" - FUJITEC ESCALATOR

PFC63059001B

STEP GUIDE BRACKET 5" - FUJITEC ESCALATOR





PF1100102

STEP CHAIN - ASSEMBLY - 1 AXLE GS8000 ESCALATOR

PF1100101

STEP CHAIN ASSEMBLY - 12 AXLE GS8000 ESCALATOR



PFX5009R1

STEP CHAIN - 9T 1 AXLE - FUJITEC ESCALATOR

PFX5009R6

STEP CHAIN - 9T 6 AXLE - FUJITEC ESCALATOR

PFY899V1

STEP CHAIN - 15T 1 AXLE - FUJITEC ESCALATOR

PFY899V6

STEP CHAIN - 15T 6 AXLE - FUJITEC ESCALATOR

PFYL778-1

STEP CHAIN - 15TYL 1 AXLE - FUJITEC ESCALATOR

PFYL778-6

STEP CHAIN - 15TYL 6 AXLE - FUJITEC ESCALATOR



PFD62001001

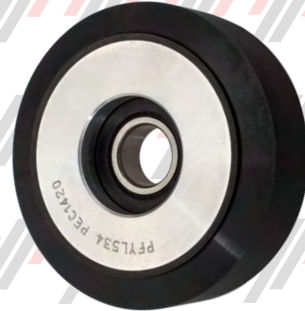
STEP AXLE - 20T CHAIN - TRANSIT ESCALATOR

PFD62015001CL

STEP CHAIN COMPLETE - 20T w/AXLES, ROLLERS, & BUSHINGS
TRANSIT ESCALATOR



PFYL533
ROLLER - CHAIN w/2 WEAR PADS
76mm OD x 20mm FACE 1200VS



PFYL534
ROLLER - STEP / STEP CHAIN
FUJITEC ESCALATOR



PFZ475AX1
ROLLER - STEP CHAIN - 2 BEARING
FUJITEC ESCALATOR



PF0900101
ROLLER - STEP CHAIN - 20mm ID
FUJITEC ESCALATOR



PFD62424001
ROLLER - STEP CHAIN - 22mm ID
FUJITEC ESCALATOR



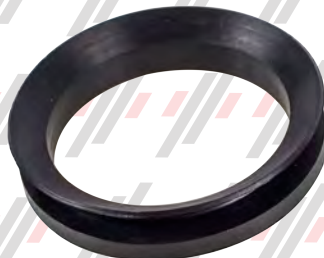
PFD62E79001
STEP ATTACHMENT BUSHING (BK)
FUJITEC VS1200 ESCALATOR



PFD62E76001
STEP ATTACHMENT BUSHING (GY)
FUJITEC VS1200 ESCALATOR



PFD62453001
BEARING CAP
FUJITEC ESCALATOR



PFD62448001
RUBBER SEAL - STEP CHAIN
FUJITEC ESCALATOR



PFD00915256
RETAINING RING - ROLLER
FUJITEC ESCALATOR



PFD62447001
STEP CHAIN SHIM .005"
FUJITEC ESCALATOR

PFD62447002
STEP CHAIN SHIM .012"
FUJITEC ESCALATOR

PFD62426001
STEP CHAIN SHIM .056"
FUJITEC ESCALATOR



For All Your Premium Handrail Needs Please See Page 18



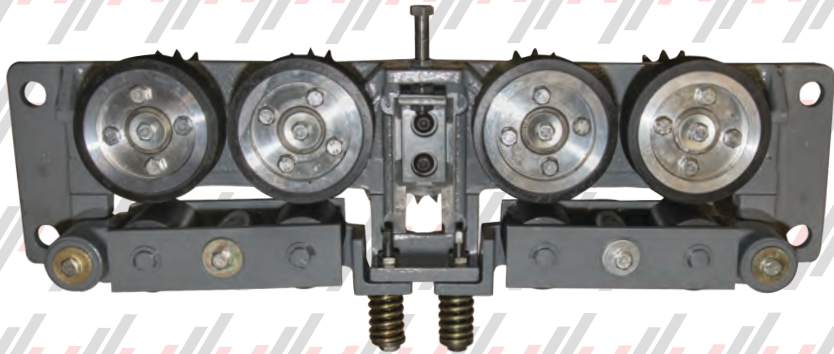
Inventory is Assured

Endless & Open Ended

Quality is Essential

All Makes & Models

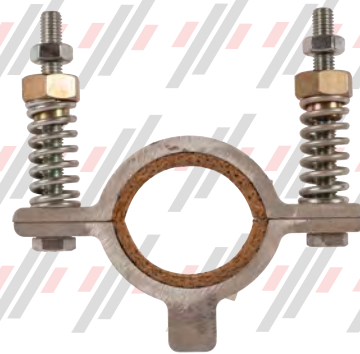
• • • • • WE SHIP WORLDWIDE • • • • •



For Any Larger Escalator Components Like These, Please Call Us (800) 233-0838



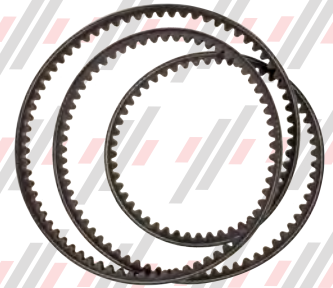
PFC62279006 PINCH ROLLER ASSEMBLY FUJITEC ESCALATOR



PFC65077001 LEVER ASSEMBLY - 60mm FUJITEC ESCALATOR



PF0200198 DRIVE BELT - 3VX450 FUJITEC ESCALATOR



PF0200199 DRIVE BELT - 3VX600 FUJITEC ESCALATOR



PFC62286001
JACK SHAFT 50mm, HR DRIVE
COMMERCIAL ESCALATOR

PFC62286002
JACK SHAFT 60mm, HR DRIVE
TRANSIT ESCALATOR

Jackshaft Sprockets

PF0600362
JACKSHAFT SPROCKET - #40-62T - FUJITEC ESCALATOR

PF0600370
JACKSHAFT SPROCKET - #40-70T - FUJITEC ESCALATOR

PF0600347
JACKSHAFT SPROCKET - #50-47T - FUJITEC ESCALATOR

PF0600350
JACKSHAFT SPROCKET - #50-50T - FUJITEC ESCALATOR

PF0600351
JACKSHAFT SPROCKET - #50-51T - FUJITEC ESCALATOR

PF0600333
JACKSHAFT SPROCKET - #60-33T - FUJITEC ESCALATOR

PF0600337
JACKSHAFT SPROCKET - #60-37T - FUJITEC ESCALATOR

PFD62286001D02
JACKSHAFT SPROCKET #60-38T - FUJITEC ESCALATOR

PF0600339
JACKSHAFT SPROCKET - #60-39T - FUJITEC ESCALATOR

PFD62286001D01
JACKSHAFT SPROCKET - #80-32T - FUJITEC ESCALATOR

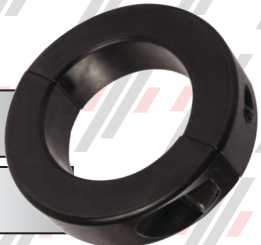
PF0600383
JACKSHAFT SPROCKET - #80-33T - FUJITEC ESCALATOR



PFC62286001A
SPANNER WRENCH - JACKSHAFT ASSEMBLY - FUJITEC ESCALATOR

PFC62286001B
SHAFT COLLAR - 50mm JACKSHAFT ASSEMBLY - FUJITEC ESCALATOR

PFC62286001C
SHAFT COLLAR - 60mm JACKSHAFT ASSEMBLY - FUJITEC ESCALATOR





PF0600820
HR COUNTER SHAFT BEARING - 50mm - FUJITEC ESCALATOR



PF0600822
HR COUNTER SHAFT BEARING - 60mm - FUJITEC ESCALATOR



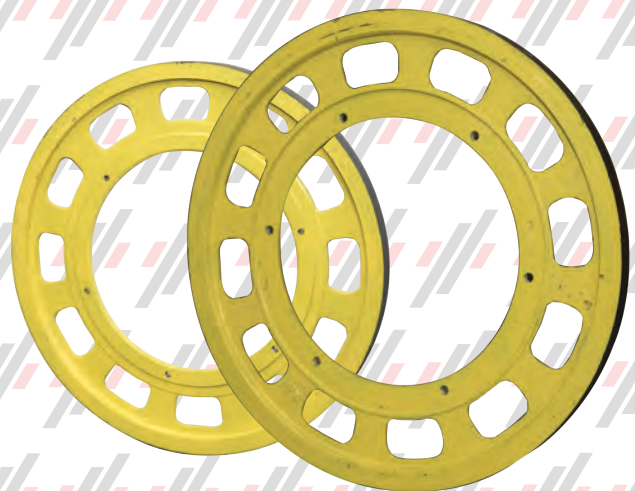
PF0600329
HR CHAIN TENSION ASSY #80-15T
FUJITEC ESCALATOR



PF062773001
TRACTION BAND w/FASTENERS
FUJITEC ESCALATOR



PFC62288001
SHEAVE - HR DRIVE ASSEMBLY
FUJITEC ESCALATOR - TRANSIT UNITS



PF0600400
SHEAVE - HR DRIVE ASSEMBLY 23 1/4" - FUJITEC ESCALATOR

PF0600417
SHEAVE - HR DRIVE ASSEMBLY TYPE P 17 1/2" - FUJITEC ESCALATOR



PFC62373001
SPROCKET IDLER - #60-19T
FUJITEC ESCALATOR



PFC52368001
SPROCKET- IDLER - #80-15T
FUJITEC ESCALATOR



PF0600320
SPROCKET - IDLER - #50-16T
DRIVE FRAME - FUJITEC ESCALATOR



PF0600319
BRACKET - CENTER TENSION
w/16T SPROCKET - FUJITEC ESCALATOR



PF0600321
SPROCKET - HR DRIVE #50-20T
DRIVE FRAME - FUJITEC ESCALATOR



PF0600310
SPROCKET - HR #50-24 TAPPED & THRU HOLE
FUJITEC ESCALATOR



PF0600312
SPROCKET - HR #50-24 THRU HOLE
LARGE - FUJITEC ESCALATOR

PFD62295001
SPROCKET - HR DRIVE SHEAVE #60-87T
FUJITEC ESCALATOR



PFD62277005
HANDRAIL CHAIN - #80 x 232 PITCHES - FUJITEC ESCALATOR



PF0900302
ROLLER - HR DRIVE 4 BOLT - 38mm ID
FUJITEC ESCALATOR



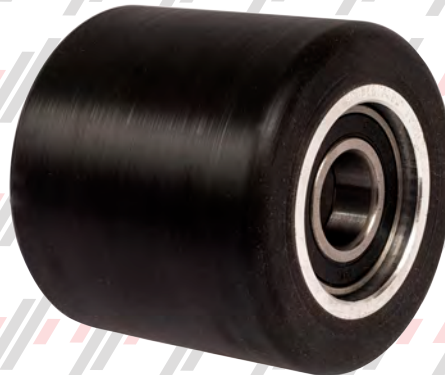
PF0900301
ROLLER - HR DRIVE 4 BOLT - 40mm ID
FUJITEC ESCALATOR



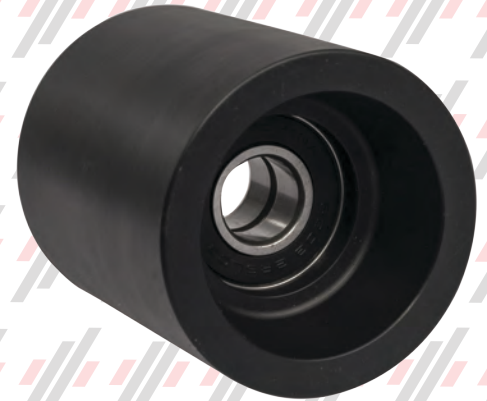
PF0900303
ROLLER - HR DRIVE 4 BOLT - 40mm ID
OD 5.157" - FUJITEC ESCALATOR



PFYL99101
ROLLER - HR DRIVE 3 BOLT
FUJITEC ESCALATOR



PF0348CAS001
ROLLER - HANDRAIL PRESSURE
75mm OD x 70mm FACE - GS8000 ESCALATOR



PFC62320001
ROLLER - HR PRESSURE
60mm OD x 68mm FACE - FUJITEC ESCALATOR



PFC0526TS
ROLLER - HR PRESSURE
60mm OD x 55mm FACE - FUJITEC ESCALATOR



PFC62296001
ROLLER - HR TENSION GROVED
FUJITEC ESCALATOR



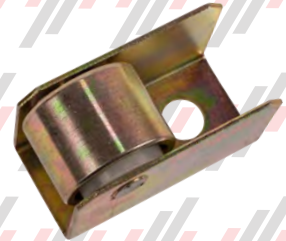
PF0600803
ROLLER - INSIDE HR PLASTIC GUIDE
FUJITEC ESCALATOR



PF0600802
ROLLER - INSIDE HR GUIDE
TRANSIT ESCALATOR



PFC64035001
NEWEL ROLLER ASSEMBLY w/SIDE PLATES
TRANSIT ESCALATOR



PF0800201
NEWEL ROLLER ASSEMBLY
TRANSIT ESCALATOR



PFC64036NA01
BRACKET ASSY - HR NEWEL GUIDE - 2 BEARING
VS1200 ESCALATOR



PF0800202
BRACKET ASSY - HR NEWEL V-ROLLER TYPE
TRANSIT ESCALATOR



PFC64036001
BRACKET ASSEMBLY - HR NEWEL
TRANSIT ESCALATOR



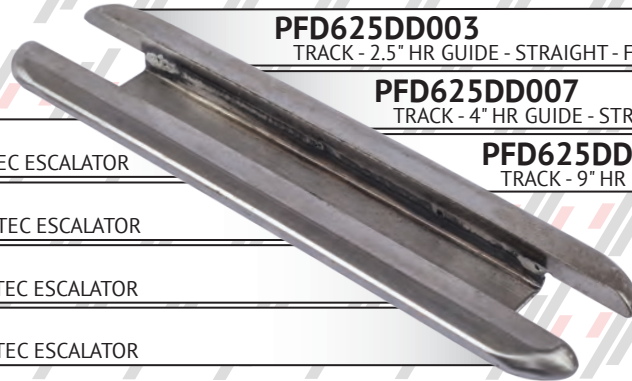
PF0800101
NEWEL END CLUSTER
GS8000 ESCALATOR



PF0800110
NEWEL END CLUSTER - 18 ROLLER LINK ASSEMBLY
GS8000 ESCALATOR



PF0800801
NEWEL TRACK - GS8000 ESCALATORS



PFD625DD003
TRACK - 2.5" HR GUIDE - STRAIGHT - FUJITEC ESCALATOR

PFD625DD007
TRACK - 4" HR GUIDE - STRAIGHT - FUJITEC ESCALATOR

PFD625DD004
TRACK - 9" HR GUIDE - STRAIGHT - FUJITEC ESCALATOR

PFD625DD005
TRACK - 25.7" HR GUIDE - STRAIGHT - FUJITEC ESCALATOR

PFD64041006
TRACK - 38.78" HR GUIDE - STRAIGHT - FUJITEC ESCALATOR

PFD64041007
TRACK - 37.40" HR GUIDE - STRAIGHT - FUJITEC ESCALATOR

PFD64041008
TRACK - 27.95" HR GUIDE - STRAIGHT - FUJITEC ESCALATOR



PFD625DD002
TRACK - 2.5" HR GUIDE - UPPER CURVE - FUJITEC ESCALATOR

PFD625DD006
TRACK - 4" HR GUIDE - LOWER CURVE - FUJITEC ESCALATOR

PFD625DD008
TRACK - 4" HR GUIDE - UPPER CURVE - FUJITEC ESCALATOR

PFD625DD009
TRACK - 8" HR GUIDE - LOWER CURVE - FUJITEC ESCALATOR

PFD625DD001
TRACK - 8" HR GUIDE - UPPER CURVE - FUJITEC ESCALATOR



PF0800301
HANDRAIL ENTRY BRUSH - LH - FUJITEC ESCALATOR

PF0800302
HANDRAIL ENTRY BRUSH - RH - FUJITEC ESCALATOR



PFD62667001
MAIN DRIVE CHAIN #140-2 - FUJITEC ESCALATOR

PFD62668001
MAIN DRIVE CHAIN #80-2 - FUJITEC ESCALATOR

PFD62669001
MAIN DRIVE CHAIN #120-2 - FUJITEC ESCALATOR



PF0129CAE001 (YELLOW PLASTIC)
LH - 22T - 203mm - 2 RECESSED TEETH - 2 HOLE
GS8000 ESCALATOR

PF0129CAD001 (YELLOW PLASTIC)
CENTER - 22T - 199mm - 2 HOLE
GS8000 ESCALATOR

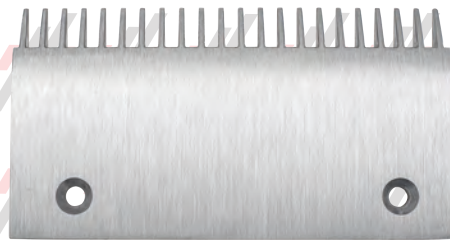
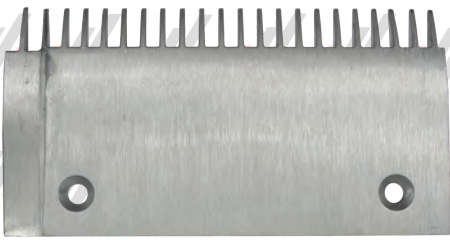
PF0129CAF001 (YELLOW PLASTIC)
RH - 22T - 203mm - 2 RECESSED TEETH - 2 HOLE
GS8000 ESCALATOR



PF0129CAE300 (YELLOW PLASTIC)
LH - 22T - 203mm - 2 RECESSED TEETH - 3 HOLE
GS8000 ESCALATOR

PF0129CAD300 (YELLOW PLASTIC)
CENTER - 22T - 199mm - 3 HOLE
GS8000 ESCALATOR

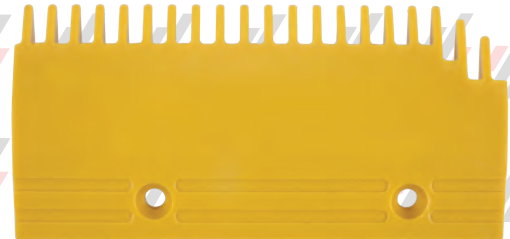
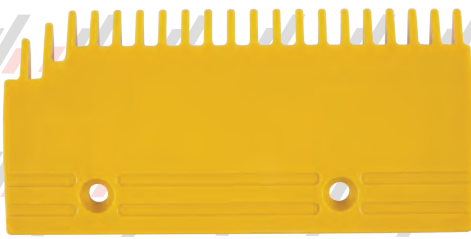
PF0129CAF300 (YELLOW PLASTIC)
RH - 22T - 203mm - 2 RECESSED TEETH - 3 HOLE
GS8000 ESCALATOR



PF120011 (ALUMINUM)
LH - 22T - 203mm - 2 RAISED TEETH - 2 HOLE
GS8000 ESCALATOR

PF1200110 (ALUMINUM)
CENTER - 22T - 199mm
GS8000 ESCALATOR

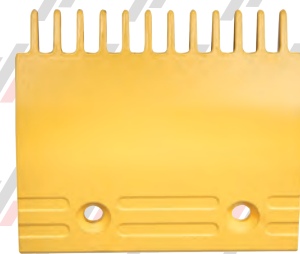
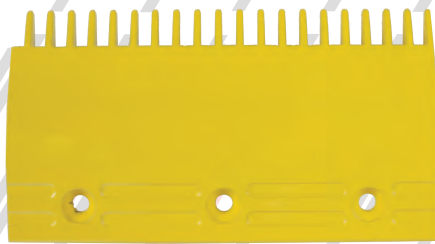
PF120012 (ALUMINUM)
RH - 22T - 203mm - 2 RAISED TEETH - 2 HOLE
GS8000 ESCALATOR



PFX129AV1 (YELLOW PLASTIC)
LH - 20T - 203mm - 2 RECESSED TEETH - 2 HOLE
VS1200 ESCALATOR

PFX129AT1 (YELLOW PLASTIC)
CENTER - 20T - 99mm - 2 HOLE
VS1200 ESCALATOR

PFX129AW1 (YELLOW PLASTIC)
RH - 20T - 203mm - 2 RECESSED TEETH - 2 HOLE
VS1200 ESCALATOR



PFD63007002 (YELLOW ALUMINUM)
CENTER/LH - 20T - 203mm
FUJITEC ESCALATOR

PFD63007001 (YELLOW ALUMINUM)
RH - 20T - 203mm
FUJITEC ESCALATOR

PF1200120 (YELLOW ALUMINUM)
CENTER - 12T - 105mm
FUJITEC ESCALATOR

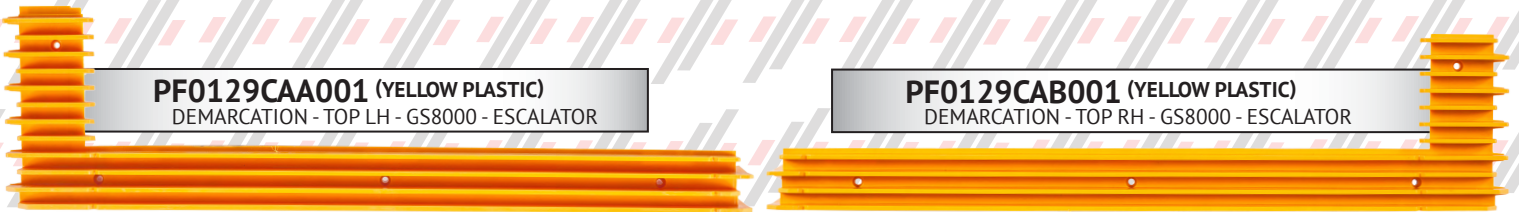


PFD63081001
SCREW - COMBPLATE - FUJITEC ESCALATOR



PF0129CAA001 (YELLOW PLASTIC)
DEMARICATION - TOP LH - GS8000 - ESCALATOR

PF0129CAB001 (YELLOW PLASTIC)
DEMARICATION - TOP RH - GS8000 - ESCALATOR

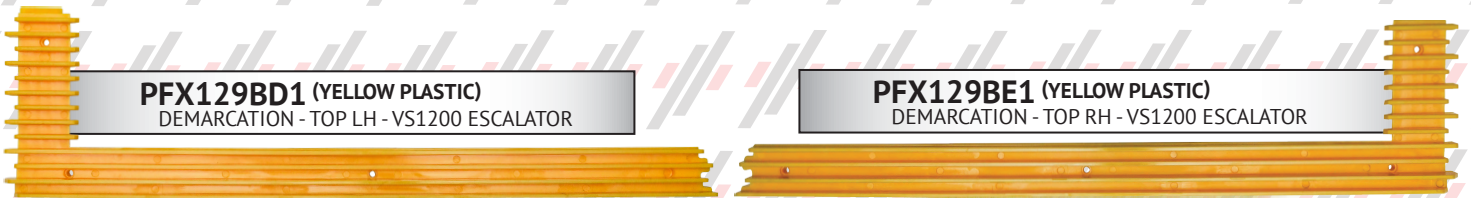


PF0129CAC001 (YELLOW PLASTIC)
DEMARICATION - CENTER - GS8000 ESCALATOR



PFX129BD1 (YELLOW PLASTIC)
DEMARICATION - TOP LH - VS1200 ESCALATOR

PFX129BE1 (YELLOW PLASTIC)
DEMARICATION - TOP RH - VS1200 ESCALATOR



PFX129BF1 (YELLOW PLASTIC)
DEMARICATION - CENTER - VS1200 - ESCALATOR



PF1000702 (YELLOW PLASTIC)
DEMARICATION - CENTER - LEFT
GS8000 - ESCALATOR

PF1000701 (YELLOW PLASTIC)
DEMARICATION - CENTER - MID
GS8000 - ESCALATOR

PF1000703 (YELLOW PLASTIC)
DEMARICATION - CENTER - RIGHT
GS8000 - ESCALATOR





PFD65072001

LIMIT SWITCH - SKIRT SWITCH - FUJITEC ESCALATOR



PFD6548001
MISSING STEP DETECTOR
FUJITEC ESCALATOR



PFD63069001
COMBPLATE SWITCH
FUJITEC ESCALATOR



PFP65082001
ROTARY LIMIT SWITCH
FUJITEC ESCALATOR



PF0100905
BALUSTRADE LIGHTBULB - FUJITEC ESCALATOR



PFD65211001
E-STOP COVER
FUJITEC ESCALATOR