



# **Precision Escalator Products, Inc.**

## **Safety Components**

<b>Safety Signs and Guards</b>	<b>8</b>
<b>Skirt Brushes and Assemblies</b>	<b>9</b>
<b>Start and Stop Stations</b>	<b>10</b>
<b>Motion Control Panels</b>	<b>12</b>
<b>Lighting</b>	<b>14</b>
<b>Microswitches</b>	<b>15</b>
<b>Roller Chains</b>	<b>17</b>
<b>Tools</b>	<b>18</b>
<b>Gear Oil &amp; Tools</b>	<b>19</b>





**PE0100900**  
PAPER - STICKER  
CAUTION SIGN



**PE0100920**  
1/16" RIGID PLASTIC  
CAUTION SIGN



**PE0100922**  
4" x 7" RIGID PLASTIC  
CAUTION SIGN



**PE0100910**  
FLEXIBLE PLASTIC  
CAUTION SIGN



**PE0100921**  
4" x 7" FLEXIBLE PLASTIC  
CAUTION SIGN



**PE0100923**  
4" x 7" RIGID PLASTIC  
CAUTION SIGN

### Anit-Slide Devices PRECISION ESCALATOR PRODUCTS INC.



**PE0100930**  
ANTI-SLIDE DEVICE - SS 2" OD X 3/4" HIGH



**PE0100931**  
ANTI-SLIDE DEVICE - SS 3" OD X 1" HIGH

**PE0100932**  
ANTI-SLIDE DEVICE - SS 3" OD X 2" HIGH

**PE0100933**  
ANTI-SLIDE DEVICE - BRASS 3" OD X 1" HIGH

**PE0100934**  
ANTI-SLIDE DEVICE - BRASS 1.5" OD X 1" HIGH

**PE0100935**  
ANTI-SLIDE DEVICE - BRASS 1.94" OD X .75" HIGH

**PE0100936**  
ANTI-SLIDE DEVICE - SS 3" OD X 3/4" HIGH



**PE0100955**  
CEILING GUARD - LH SIDE

**PE0100956**  
CEILING GUARD - RH SIDE

**PE0100957**  
INTERSECTION GUARD - LH SIDE

**PE0100958**  
INTERSECTION GUARD - RH SIDE

**PE0100951**  
OUTSIDE DECKING GUARD A-FRAME  
w/SAFETY STICKER

**Please Ask Us About More Sizes and Styles**  
\* Custom Designs Also Available \*



Precision's Safety Skirt Brush Kits

MotionGuard™, MG3 Escalator Skirt Brush

Safety Brushes Made Easy

Flexible, One Piece Design  
Bend On Site  
No Mistakes

Most Cost Effective Product Available  
**Save Money, Save Time**  
Quick & Easy To Order, Install, and Maintain

- \* Patented one piece design is ASME A17.1 code compliant
- \* One easy measurement is all you need
- \* Simple survey & order Form are combined on one page
- \* Can be ordered in bulk - no survey needed
- \* Attractive & highly durable, thousands of installs completed
- \* Packaging very easy to handle, cost effective to ship

Please Call Us For Your Application and Order Form (800) 233-0838



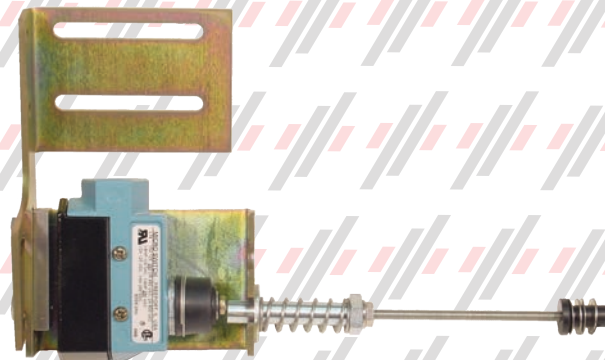
**PE0100777**  
SKIRT BRUSH - SOLD BY THE FOOT  
PRECISION ESCALATOR PRODUCTS INC.



**PE0100778**  
SCREW - SKIRT BRUSH  
PRECISION ESCALATOR PRODUCTS INC.



**PE0100779**  
SKIRT BRUSH END  
PRECISION ESCALATOR PRODUCTS INC.



Universal Skirt Switch Kits

Left Assembly

**PE0100710**  
SKIRT ASSEMBLY - SINGLE CONTACT - LH  
PRECISION ESCALATOR PRODUCTS INC.

**PE0100721**  
SKIRT ASSEMBLY - DOUBLE CONTACT - LH  
PRECISION ESCALATOR PRODUCTS INC.

Right Assembly

**PE0100700**  
SKIRT ASSEMBLY - SINGLE CONTACT - RH  
PRECISION ESCALATOR PRODUCTS INC.

**PE0100720**  
SKIRT ASSEMBLY - DOUBLE CONTACT - RH  
PRECISION ESCALATOR PRODUCTS INC.





### Emergency Stop Stations



#### PE0100201

E-STOP STATION - SS FINISH  
NEWEL MOUNT 120 VAC BUZZER - 1NC

#### PE0100201A

E-STOP STATION - SS FINISH  
NEWEL MOUNT 24 VAC BUZZER - 1NC

#### PE0100204

E-STOP STATION - SS FINISH  
NEWEL MOUNT W/ PROX SWITCH 24 VAC/VDC BUZZER - 1NC

#### PE0100210

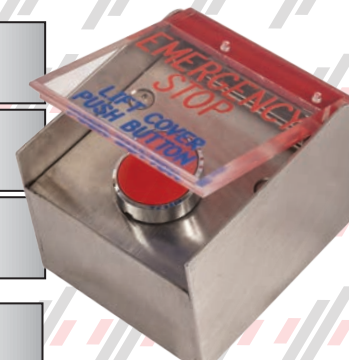
E-STOP BOX - SS FINISH - PEDESTAL MOUNT  
120 VAC BUZZER - 1NC

#### PE0100211

E-STOP STATION - SS FINISH - PEDESTAL MOUNT  
24 VAC BUZZER - 1NC

#### PE0100202

E-STOP STATION - BRONZE FINISH  
NEWEL MOUNT 120 VAC BUZZER - 1NC



### Small Start and Stop Stations

#### PE0100120

START/STOP STATION - NEWEL MOUNT SS FINISH  
120 VAC BUZZER - 1NC PREWIRED w/12' SEALTITE, NARROW CURVED FRONT

#### PE0100121

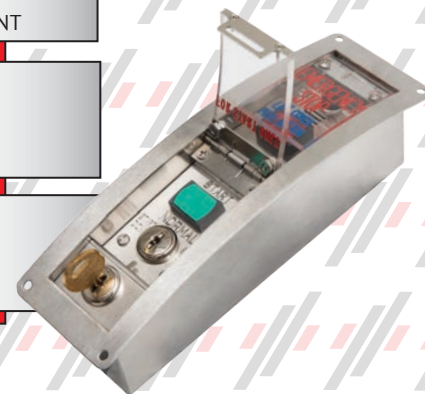
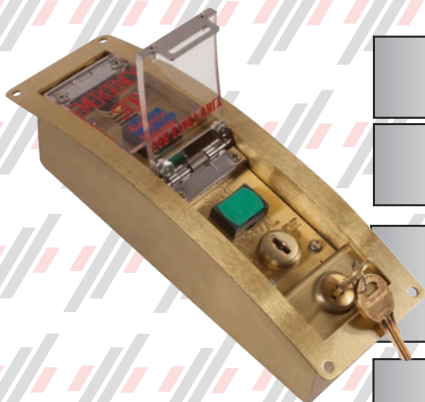
START/STOP STATION - NEWEL MOUNT SS FINISH  
24 VAC BUZZER - 1NC PREWIRED w/12' SEALTITE, NARROW CURVED FRONT

#### PE0100122

START/STOP STATION - NEW CONTROLLER - NEWEL MOUNT  
BRONZE FINISH 120 VAC BUZZER - 1NC  
PREWIRED w/12' SEALTITE, NARROW CURVED FRONT

#### PE0100123

START/STOP STATION - NEWEL MOUNT  
SS FINISH 24 VAC BUZZER - 1NC  
PREWIRED w/12' SEALTITE, NARROW CURVED FRONT



### Large Start and Stop Stations

#### PE0100100

START/STOP STATION  
NEWEL MOUNT-SS FINISH 120 VAC BUZZER

#### PE0100101

START/STOP STATION  
NEWEL MOUNT-SS FINISH 24 VAC BUZZER

#### PE0100110

START/STOP STATION - BRONZE FINISH  
NEWEL MOUNT- 120 VAC BUZZER





## Large Pedestal Start and Stop Stations



### PE0100105

START/STOP STATION PEDESTAL MOUNT - SS FINISH  
120 VAC BUZZER - 1NC PREWIRED w/12' SEALTITE

### PE0100106

START/STOP STATION PEDESTAL MOUNT - SS FINISH  
24 VAC/VDC BUZZER - 1NC PREWIRED w/12' SEALTITE

### PE0100107

START/STOP STATION NEW CONTROLLER - PEDESTAL  
24 VAC/VDC BUZZER - 1NC PREWIRED w/12' SEALTITE

### PE0100115

START/STOP STATION - PEDESTAL MOUNT BRONZE FINISH  
120 VAC BUZZER PREWIRED w/12' SEALTITE

### PE0100116

START/STOP STATION - PEDESTAL MOUNT BRONZE FINISH  
24 VAC/VDC BUZZER PREWIRED w/12' SEALTITE

### PE0100117

START/STOP STATION NEW CONTROLLER- PEDESTAL MOUNT BRONZE FINISH  
24 VAC/VDC BUZZER PREWIRED w/12' SEALTITE



### PE0100280

STOP SWITCH - PLASTIC - MACHINE SPACE/PIT



### PE0100281

STOP SWITCH - S.S. BOX SPACE/PIT



### PE0100150D01

KEY - H202 FOR PRECISION'S START/STOP STATION

### PE0100150D02

KEY T112 FOR PRECISION'S START/STOP STATION

**\*Please Call Us for Station Replacement Parts\***



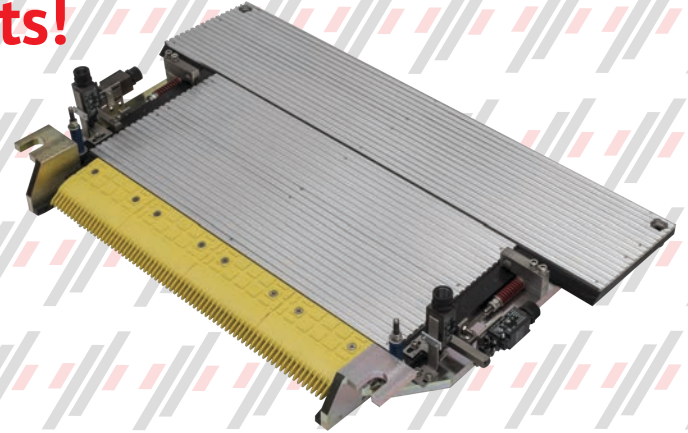


Precision's Combplate Impact Device

Stop Landing Plate Accidents!

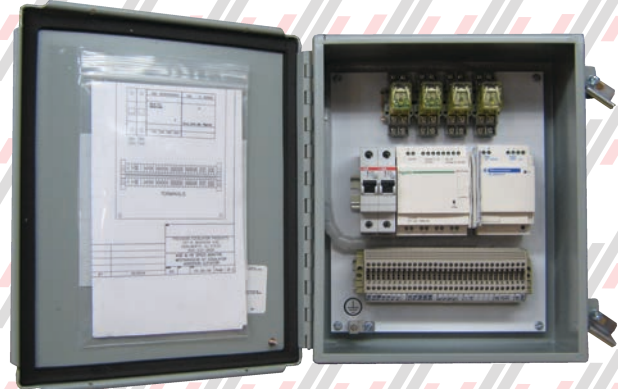
For Application and Ordering Information

Please Call: (800)-233-0838

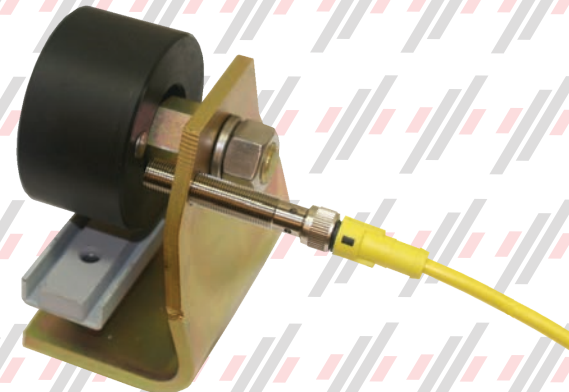


Add Combplate Safety Switches to Your Escalators, Available for Many Types and Models

Handrail Speed Monitor and Missing Step Detector with Controller



- PE0100400**  
MISSING STEP/HR MONITOR - 120 VAC CONTROLLER & SENSORS
- PE0100410**  
MISSING STEP- 120 VAC CONTROLLER & SENSORS
- PE0100420**  
HANDRAIL SPEED MONITOR - 120 VAC CONTROLLER & SENSORS



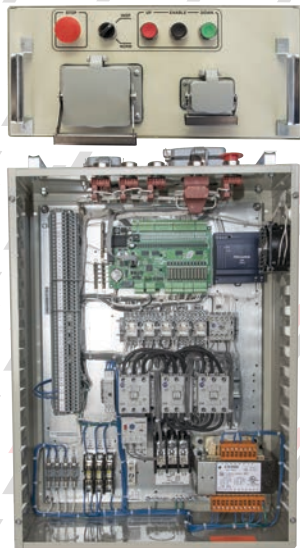


# Motion Control Engineering Inc. 3000ES Escalator Controller

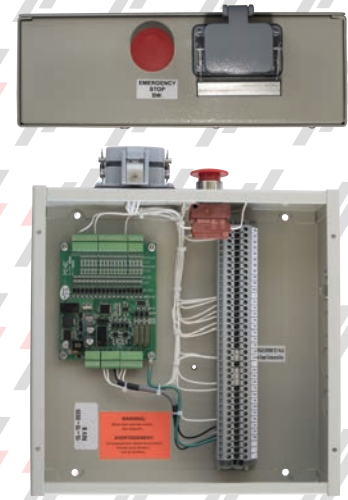
The Motion 3000ES controller provides both hardware and software flexibility.

The standard configuration uses two small cabinets:

One for the primary electronics at the top on the entrance; one for the bottom entrance. Each cabinet has it's own processor to monitor the safety devices. This distributed architecture simplifies connections, reduces bulky wiring, and provides redundant safety processing.



Upper Panel



Lower Panel

**PE0500601**  
CONTROLLER - INVERTER DRIVE w/FAULT INDICATOR

**PE0500602**  
CONTROLLER - DIRECT LINE CONTROL w/FAULT INDICATOR

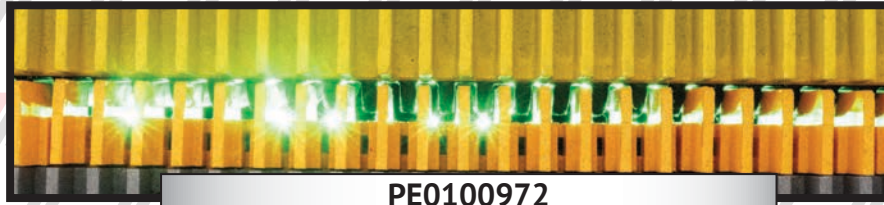
**PE0500607**  
ECONOMY MODE SENSOR KIT - MCE CONTROLLER w/VVVF DRIVE

**\*Only Sold with Controller\***

**PE0500611**  
REMOTE INSPECTION STATION







**PE0100972**  
DEMARICATION LIGHT LED 24VAC



**PE0100999**  
TRANSFORMER 24VAC FOR LED DEMARICATION LIGHTS

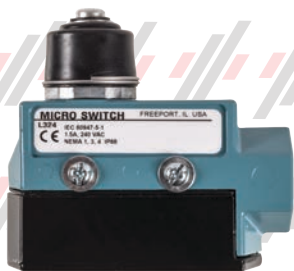


**PE0100980**  
COMBPLATE LIGHTING - 4PC. SET - ROUND STYLE - LED 24VAC



**PE0100981**  
COMBPLATE LIGHTING 1PC. - ROUND STYLE - LED 24VAC





**PE0100501**  
MICRO SWITCH PLUNGER  
w/SEALED BOOT



**PE0100502**  
MICRO SWITCH COIL SPRING  
WITH SEALED BOOT



**PE0100503**  
MICRO SWITCH ROLLER  
w/MANUAL RESET



**PE0100504**  
MICRO SWITCH ROLLER TYPE  
w/SEALED BOOT



**PE0100505**  
MICRO SWITCH PLUNGER TYPE  
WITHOUT BOOT



**PE0100506**  
MICRO SWITCH COIL SPRING  
w/MANUAL RESET, SEALED BOOT



**PE0100507**  
MICRO SWITCH PLUNGER TYPE  
w/MANUAL RESET



**PE0100508**  
MICRO SWITCH ROLLER TYPE  
w/MANUAL RESET



**PE0100509**  
MICRO SWITCH DPDT  
PLUNGER TYPE SEALED BOOT



**PE0100510**  
MICRO SWITCH ROLLER TYPE  
SHORT SIDE WITH SEALED BOOT



**PE0100511**  
MICRO SWITCH DPDT  
ROLLER TYPE SEALED BOOT



**PE0100512**  
LIMIT SWITCH DPDT  
COIL SPRING TYPE



**PE0100518**  
MICRO SWITCH DPDT  
ADJ. ROLLER TYPE SEALED BOOT



**PE0100519**  
MICRO SWITCH  
ADJ. ROLLER TYPE SEALED BOOT



**PE0100513**  
LIMIT SWITCH 2 NC CONTACT  
OFFSET ROLLER LEVER



**PE0100514**  
LIMIT SWITCH AUTO RESET  
METAL - OFFSET ROLLER LEVER



**PE0100516**  
LIMIT SWITCH MANUAL RESET  
METAL - OFFSET ROLLER LEVER



**PE0100520**  
LIMIT SWITCH AUTO RESET  
SNAP ACTION - OFFSET ROLLER



**PE337203**  
LIMIT SWITCH MANUAL RESET  
SWE ESCALATOR



**PE0500217**  
PROXIMITY SWITCH CABLE STRAIGHT CONNECTOR 5 METER

**PE0500218**  
PROXIMITY SWITCH CABLE STRAIGHT CONNECTOR 15 METER

**PE0500219**  
PROXIMITY SWITCH CABLE ANGLE CONNECTOR 5 METER

**PE0500220**  
PROXIMITY SWITCH CABLE ANGLE CONNECTOR 15 METER

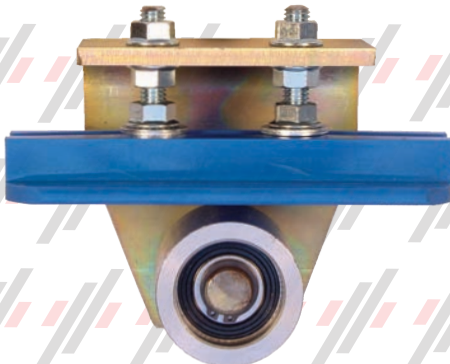
**PE0500215**  
PROXIMITY SWITCH CABLE ANGLE CONNECTOR 25 METER



**PE0100517**  
LIMIT SWITCH - SKIRT SWITCH  
LARGE BASE W/ PLUNGER



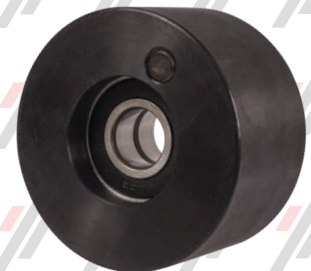
**PE0500203**  
PROXIMITY SENSOR 12 MM NBB4 PNP TYPE



**PE0100320**  
HR ANTI-STATIC ROLLER ASSEMBLY  
(2 PC SET) "NEED TYPE OF ESCALATOR"



**PW5193D65H01**  
ROLLER - ANTI-STATIC  
PRECISION



**PE0100331**  
ROLLER - HR SPEED/MCE CONTROLLER  
PRECISION





## Ansi Roller Chains

### Roller Chain

**#40 CHAIN**  
ROLLER CHAIN - #40

**#50 CHAIN**  
ROLLER CHAIN - #50

**#60 CHAIN**  
ROLLER CHAIN - #60

**#60-4 CHAIN**  
ROLLER CHAIN - #60-4

**#60-5 CHAIN**  
ROLLER CHAIN - #60-5

**#80 CHAIN**  
ROLLER CHAIN - #80

**#80-2 CHAIN**  
ROLLER CHAIN - #80-2

**#80-3 CHAIN**  
ROLLER CHAIN - #80-3

**#100 CHAIN**  
ROLLER CHAIN - #100

**#100-2 CHAIN**  
ROLLER CHAIN - #80

**#100-3 CHAIN**  
ROLLER CHAIN - #80-2

**#120 CHAIN**  
ROLLER CHAIN - #120

**#120-2 CHAIN**  
ROLLER CHAIN - #120-2

### Master Link

**#40 MASTER**  
MASTER LINK FOR #40 CHAIN

**#50 MASTER**  
MASTER LINK FOR #50 CHAIN

**#60 MASTER**  
MASTER LINK FOR #60 CHAIN

**#60-4 MASTER**  
MASTER LINK FOR #60-4 CHAIN

**#60 CHAIN MASTER**  
MASTER LINK FOR #60-5 CHAIN

**#80 MASTER**  
MASTER LINK FOR #80 CHAIN

**#80-2 MASTER**  
MASTER LINK FOR #80-2 CHAIN

**#80-3 MASTER**  
MASTER LINK FOR #80-3 CHAIN

**#100 CHAIN MASTER**  
MASTER LINK FOR #100 CHAIN

**#100-2 MASTER**  
MASTER LINK FOR #80 CHAIN

**#100-3 MASTER**  
MASTER LINK FOR #80-2 CHAIN

**#120 MASTER**  
MASTER LINK FOR #120 CHAIN

**#120-2 CHAIN MASTER**  
MASTER LINK FOR #120-2 CHAIN

### Off-Set Link

**#40 OFFSET**  
OFF-SET LINK FOR #40 CHAIN

**#50 OFFSET**  
OFF-SET LINK FOR #50 CHAIN

**#60 OFFSET**  
OFF-SET LINK FOR #60 CHAIN

**#60-4 OFFSET**  
OFF-SET LINK FOR #60-4 CHAIN

**#60-5 CHAIN OFFSET**  
OFF-SET LINK FOR #60-5 CHAIN

**#80 OFFSET**  
OFF-SET LINK FOR #80 CHAIN

**#80-2 OFFSET**  
OFF-SET LINK FOR #80-2 CHAIN

**#80-3 OFFSET**  
OFF-SET LINK FOR #80-3 CHAIN

**#100 CHAIN OFFSET**  
OFF-SET LINK FOR #100 CHAIN

**#100-2 OFFSET**  
OFF-SET LINK FOR #80 CHAIN

**#100-3 OFFSET**  
OFF-SET LINK FOR #80-2 CHAIN

**#120 OFFSET**  
OFF-SET LINK FOR #120 CHAIN

**#120-2 CHAIN OFFSET**  
OFF-SET LINK FOR #120-2 CHAIN



## Metric Roller Chains

### Roller Chain

**#08B CHAIN**  
ROLLER CHAIN - #08B

**#10B CHAIN**  
ROLLER CHAIN - #10B

**#12B CHAIN**  
ROLLER CHAIN - #12B

**#16B CHAIN**  
ROLLER CHAIN - #16B

**#16B-2 CHAIN**  
ROLLER CHAIN - #16B-2

**#20B-2 CHAIN**  
ROLLER CHAIN - #20B-2

**#20B-3 CHAIN**  
ROLLER CHAIN - #20B-3

### Master link

**#08B CHAIN MASTER**  
MASTER LINK FOR #08B CHAIN

**#10B MASTER**  
MASTER LINK FOR #10B CHAIN

**#12B MASTER**  
MASTER LINK FOR #12B CHAIN

**#16B MASTER**  
MASTER LINK FOR #16B CHAIN

**#16B-2 MASTER**  
MASTER LINK FOR #16B-2 CHAIN

**#20B-2 MASTER**  
MASTER LINK FOR #20B-2 CHAIN

**#20B-3 MASTER**  
MASTER LINK FOR #20B-3 CHAIN

### Off-Set Link

**#08B CHAIN OFFSET**  
OFF-SET LINK FOR #08B CHAIN

**#10B OFFSET**  
OFF-SET LINK FOR #10B CHAIN

**#12B OFFSET**  
OFF-SET LINK FOR #12B CHAIN

**#16B OFFSET**  
OFF-SET LINK FOR #16B CHAIN

**#16B-2 OFFSET**  
OFF-SET LINK FOR #16B-2 CHAIN

**#20B-2 OFFSET**  
OFF-SET LINK FOR #20B-2 CHAIN

**#20B-3 OFFSET**  
OFF-SET LINK FOR #20B-3 CHAIN



**Roller Chain Tools**



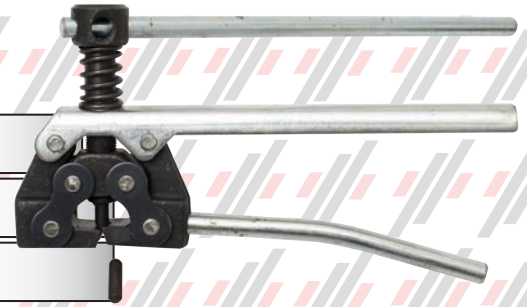
**#PP3560**  
CHAIN PULLER - #40 - #80 CHAIN

**#PP80240**  
CHAIN PULLER - #80 - #240 CHAIN

**#PE2560**  
CHAIN BREAKER - #25 - #60 CHAIN

**#PE60100**  
CHAIN BREAKER - #60 - #100 CHAIN

**#PE120160**  
CHAIN BREAKER - #120 - #160 CHAIN



**Precision's Escalator Brake Torque Tools**

**Haughton Escalators**

**PE0200905**  
BRAKE TORQUE TOOL - LARGE PLATE TYPE  
HAUGHTON ESCALATOR

**PE0200908**  
BRAKE TORQUE TOOL - PLATE TYPE  
.516 PINS ON 6.50 CENTERS - HAUGHTON ESCALATOR

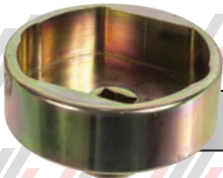
**PE0200909**  
BRAKE TORQUE TOOL - BUSHING/KEY TYPE  
HAUGHTON ESCALATOR



**Otis Escalators**

**PE0200901**  
BRAKE TORQUE TOOL - SMALL - R, RB & J ESCALATOR

**PE0200902**  
BRAKE TORQUE TOOL - LARGE - R, RB & J ESCALATOR



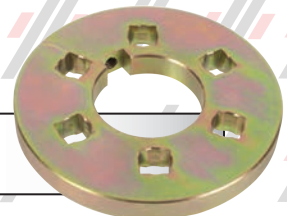
**Westinghouse Escalators**

**PE0200903**  
BRAKE TORQUE TOOL PLATE TYPE TOOL (600mm STEP)  
WESTINGHOUSE MODULAR ESCALATOR

**PE0200906**  
BRAKE TORQUE TOOL - CUP TYPE TOOL (1000mm STEP)  
WESTINGHOUSE MODULAR ESCALATOR

**PE0200904**  
BRAKE TORQUE TOOL - LARGE ALLEN TYPE  
WESTINGHOUSE N ESCALATOR

**PE0200907**  
BRAKE TORQUE TOOL - LARGE  
WESTINGHOUSE L ESCALATOR



**PE0100399**  
HANDRAIL REMOVAL TOOL - OTIS ESCALATOR







**PE0300850**

AUTO LUBRICATION PUMP KIT  
INCLUDES MANIFOLD, TUBING, FITTINGS, BRUSHES, ETC  
LUBRICATES STEP CHAIN, MAIN DRIVE CHAIN & HR DRIVE CHAINS



Please Contact Precision Escalator for All Your Escalator Reducer Oil Needs.  
We Stock Both Synthetic and Non-synthetic Oils In Every ISO Grade to Meet Your Reducer's Requirements.

**LUBRICANTS**

**PE0300801**

ESCALATOR CHAIN OIL #600 - HEAVY OIL  
5 GALLON PAIL - MULLEN OIL

**PE0300802**

ESCALATOR CHAIN OIL #600 - HEAVY OIL  
1 GALLON BOTTLE - MULLEN OIL

**PE0300810**

ESCALATOR CHAIN OIL #255 - LIGHT OIL  
1 GALLON BOTTLE - MULLEN OIL

**PE0300811**

ESCALATOR CHAIN OIL #255 - LIGHT OIL  
5 GALLON PAIL- MULLEN OIL

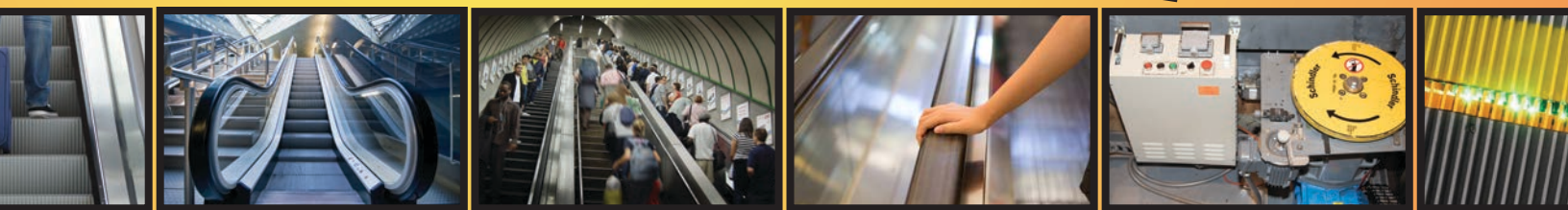
**PE0300812**

EXTRA HEAVY DUTY - SPRAY CAN

**OVER 30 YEARS IN ESCALATOR SAFETY**

**Precision Escalator Products, Inc.**

**Manufacturer of Precision Escalator Parts**



## *Safety Upgrades*

- **Non-Proprietary Escalator Controller**
- **VVVF Drive**
- **Energy Saving Slow Down Mode**
- **Missing Step Device**
- **Handrail Speed Monitor**
- **Comb-Step Impact Device**
- **Handrail Entry Device**
- **Safety Skirt Brush Kit**
- **LED Under-Step Lighting**
- **Start-Stop/E-Stop Station**



**WE SHIP WORLDWIDE**

[Sales@PrecisionEscalator.com](mailto:Sales@PrecisionEscalator.com)

[www.PrecisionEscalator.com](http://www.PrecisionEscalator.com)